

**KANEPACKAGE PHILIPPINE INC.**

No. 5 Ring Road LISP II, Brgy. La Mesa, Calamba City, Laguna  
Telephone No. (049) 545-7166 to 69  
Fax No. (049) 545-6302

# INVESTIGATION REPORT

Prepared By:

Check By:

Approved By:

DATE:

17-Nov-22

K.DIAZ

QA-IE/ Prodn IE

QA/ Prodn SV

KPLIMA Operations Gen. Mngr.

**5M REVIEW****DOCUMENT REVIEW**

MAN		Affected Document:	Date Reviewed:	Disposition:	PIC:	Target Date:
MACHINE		Procedure Manual		<input type="checkbox"/> With Revision <input type="checkbox"/> No Revision		
MATERIAL		Work Instruction		<input type="checkbox"/> With Revision <input type="checkbox"/> No Revision		
METHOD		Process Flow		<input type="checkbox"/> With Revision <input type="checkbox"/> No Revision		
ENVIRONMENT		Forms		<input type="checkbox"/> With Revision <input type="checkbox"/> No Revision		

**I. PROBLEM DESCRIPTION****1.1. ISSUE:**

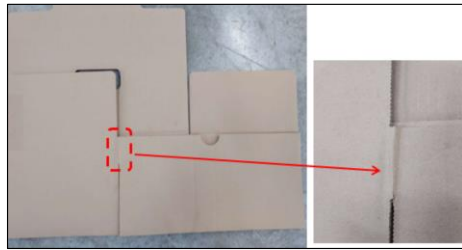
WORN-OUT

**1.2. ITEM DESCRIPTION:****PART CODE:**

515138500

**PART NAME:**

ACCESSORIES BOX

**1.3. BACKGROUND:****PICTURE****DETAILS:**

&gt; Inhouse Detection : Worn-Out

&gt; Lot size: 496pcs

&gt; Reject Qty: 40pcs

&gt; Rejection Rate: 8.06%

&gt; JO#: 25728

Remarks: Worn-out occurred on the folding side

**II. IMMEDIATE ACTION**

ACTION ITEMS	Target Date:	Person In-charge

**III. WHY WHY ANALYSIS DETAILS:****DIRECT CAUSE:**

WHY 1: Worn- out occurred on the folding side of the item.

WHY 2: Wrong fold during detaching process.

WHY 3: The operator mistaken folding the item in reversed during process.

**IV. ACTION PLAN:****DIRECT CAUSE:**

&gt; Orientation to the operator regarding for worn out item ( to follow up)

&gt; Set standard detaching of items

MAX: 5 items

MIN: 3 item

&gt; One Point Lesson for detaching process ( to follow up)